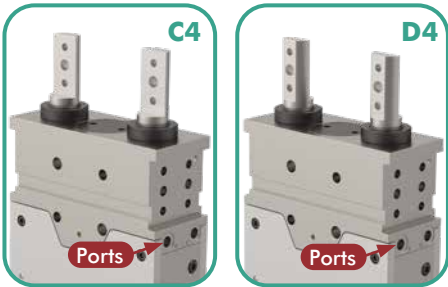


85D5-2

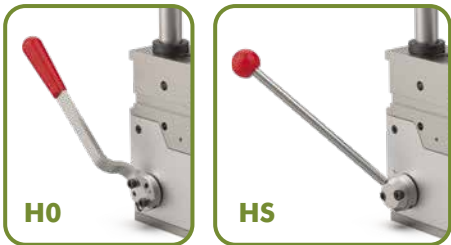
Pneumatic Pin Package | Dual Shaft | Ordering Information

85D5-2 **C4** **L8** **10** **H0** **4** | **Stroke** 4 **Description** 40 mm Stroke

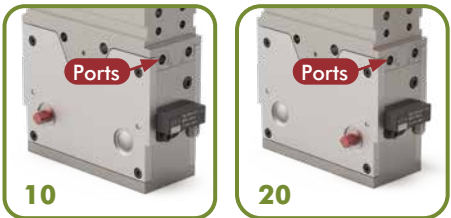
Piston Rod	Description
C4	NAAMS Standard
D4	NAAMS Standard Rotated 180°



Hand Lever	Description
00	No Hand Lever
H0	Standard Hand Lever
HS	Weldable Hand Lever

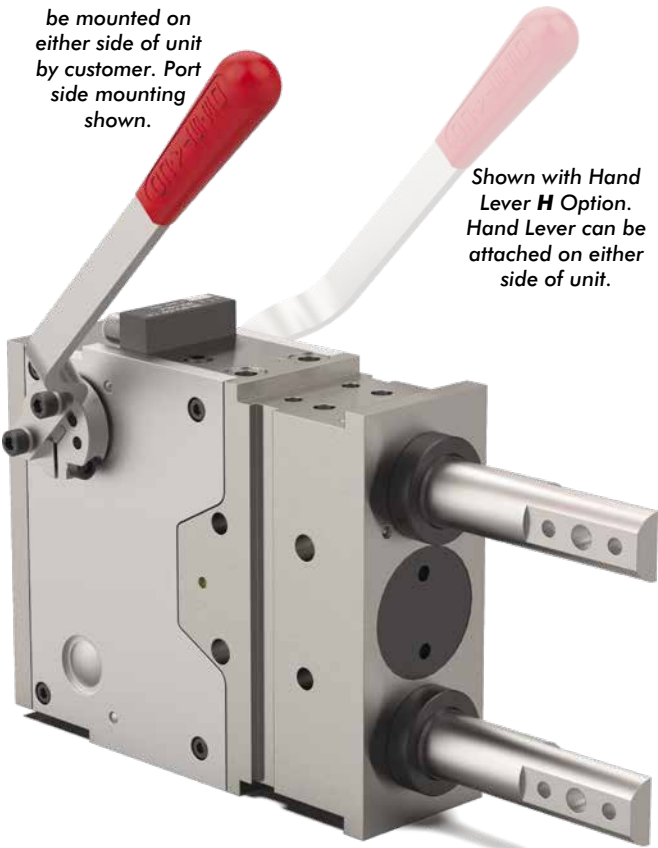


Hand Lever Shafts*	Description
10	Non-port side
20	Port side
*Hand Lever can be attached on either side of unit.	

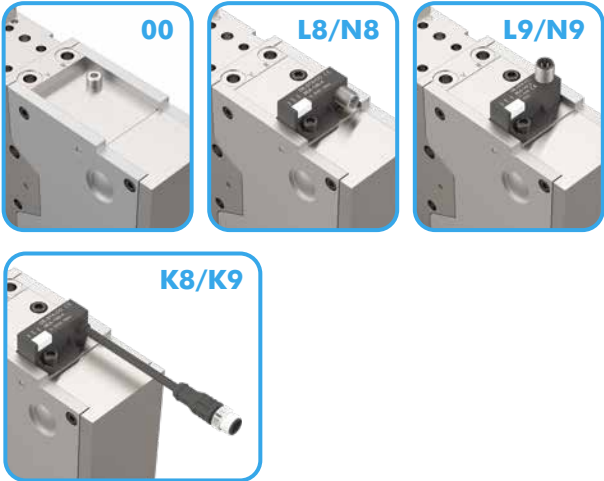


Sensor can be mounted on either side of unit by customer. Port side mounting shown.

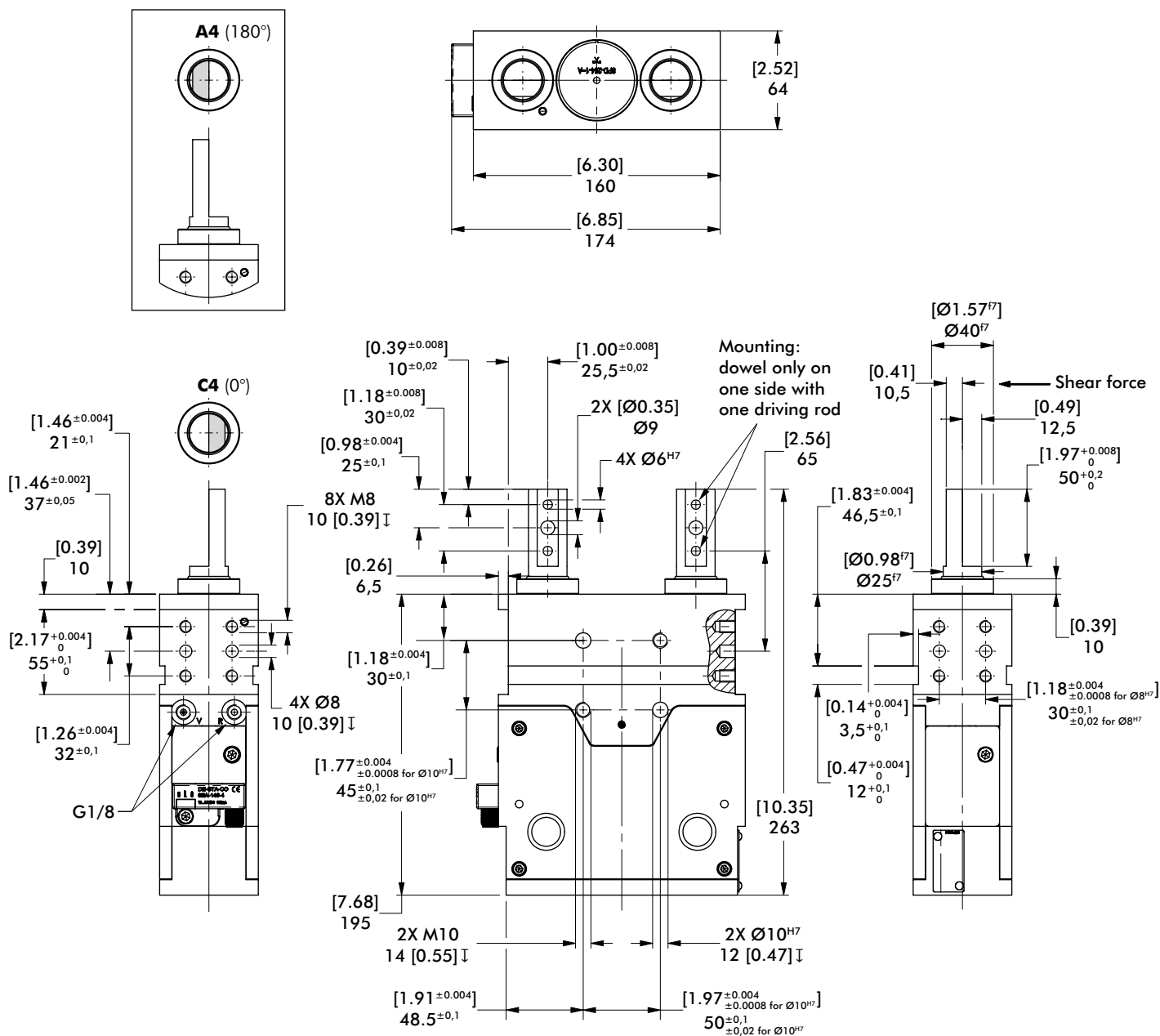
Shown with Hand Lever **H** Option. Hand Lever can be attached on either side of unit.



Sensor	Description
00	Without Sensing System
L8	PNP Sensor with In-line M12x1 Connector (8EA-146-4-B)
N8	NPN Sensor with In-line M12x1 Connector (8EA-154-4-B)
L9	PNP Sensor with 90° M12x1 Connector (8EA-147-4-B)
N9	NPN Sensor with 90° M12x1 Connector (8EA-155-4-B)
K8	PNP Sensor with M12x1 Cable Connector (8EA-158-4-B)
K9	NPN Sensor with M12x1 Cable Connector (8EA-167-4-B)
*Sensors can be mounted on opposite side by customer.	



Pneumatic Pin Package | Dual Shaft | Dimensions and Technical Specifications



Medium: Operation with oil free air is permissible

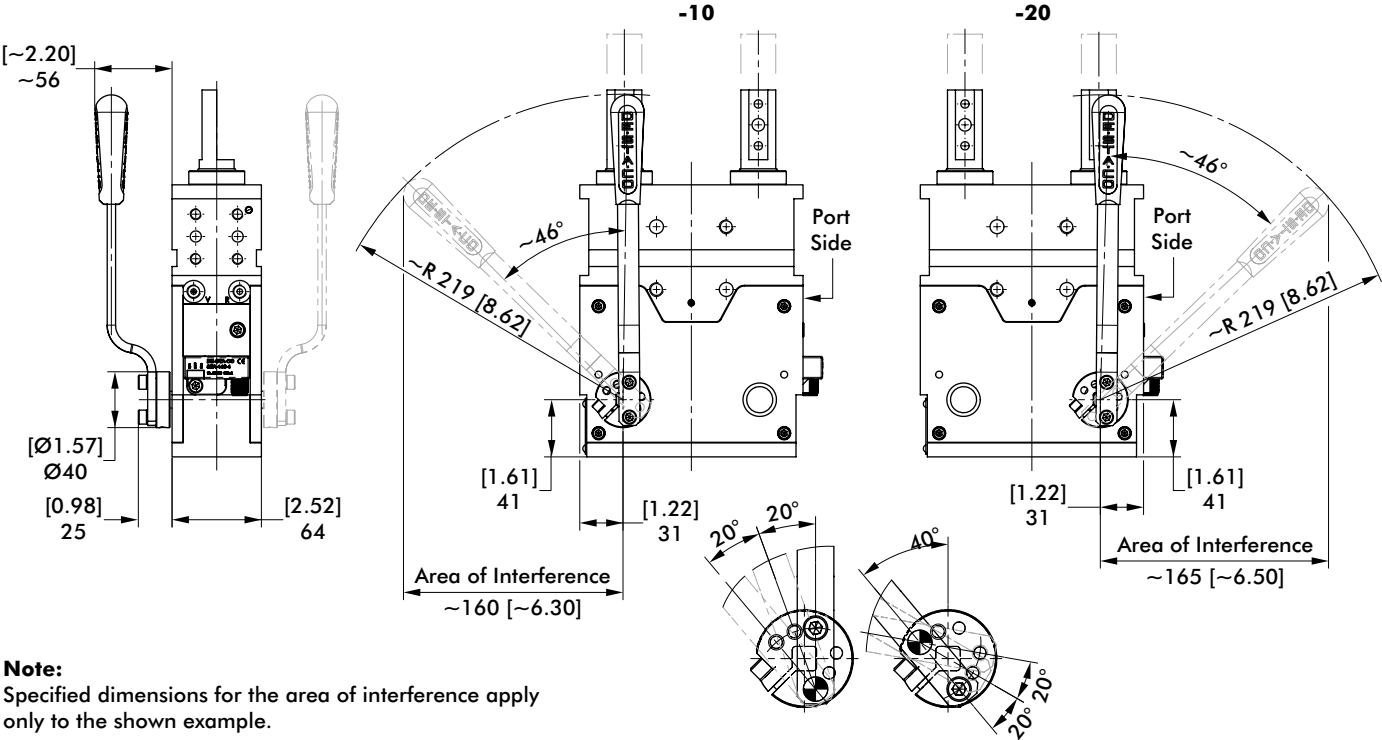
Note: Extracting force and retraction force shown in this chart are only available with the last 2 mm stroke at extracted position. In the other range of the stroke the forces will be approximately 30% of value in the chart.

Base Model	Stroke mm [in]	Pushing Force at 6 bar N [lbf]	Retraction Force at 6 bar N [lbf]	Holding Force at 6 bar N [lbf]	Max. Operating Pressure bar [psi]	Piston Ø mm [in]	Weight Kg [lbs]	Air consumption per double stroke at 5 bar dm ³ [ft ³]
85D5-2	40 [1.57]	3500 [787]	2300 [517]	5000 [1124]	6 [87]	50 [1.97]	7,8 [17.20]	1,1 [0.04]

85D5-2 OPTIONS

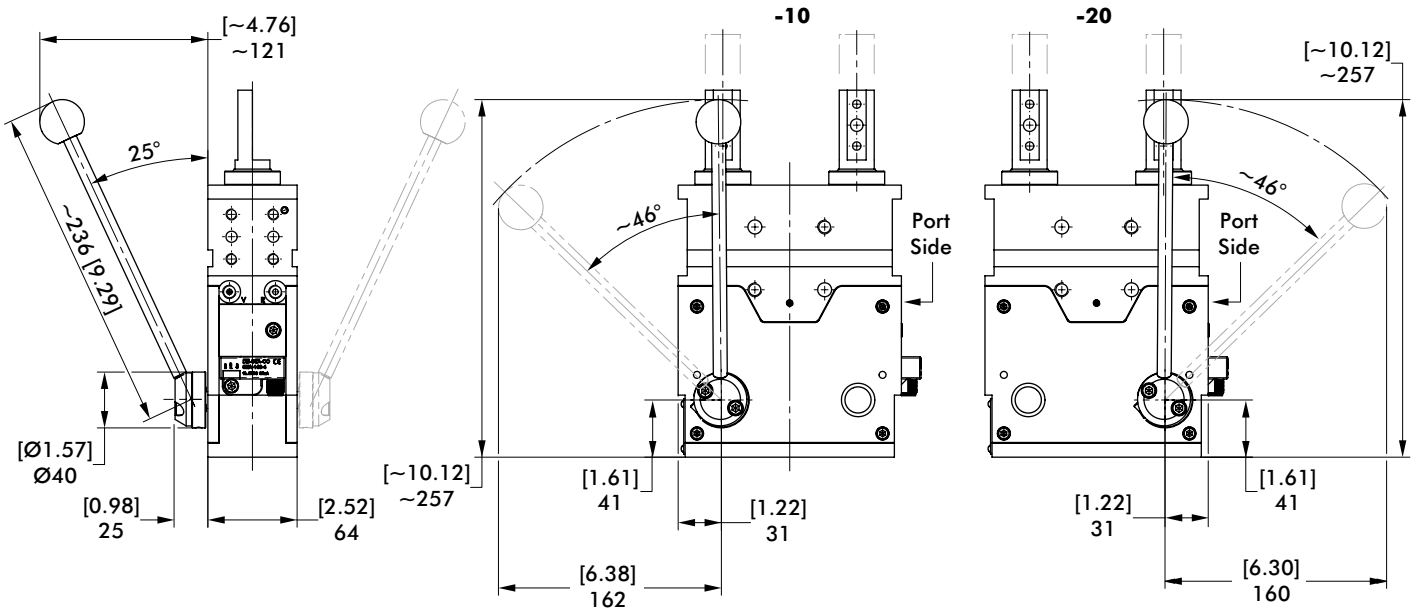
Pneumatic Pin Package | Dual Shaft | Dimensions and Technical Specifications

H0 Standard Hand Lever



Model no.	Weight kg [lb]
85D5-2*****H04	8,3 [18.29]

H0 Weldable Hand Lever

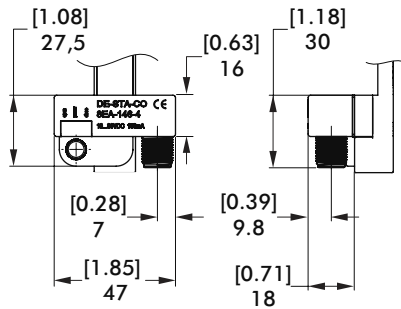


Model no.	Weight kg [lb]
85D5-2*****H54	8,3 [18.29]

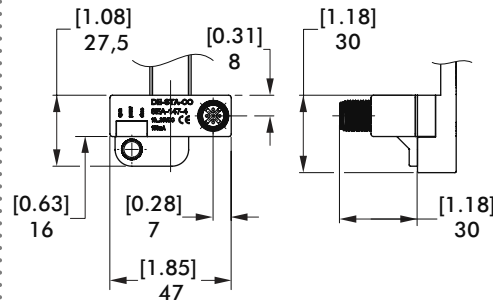
85D5-2 SENSORS

Pneumatic Pin Package | Dual Shaft | Dimensions and Technical Specifications

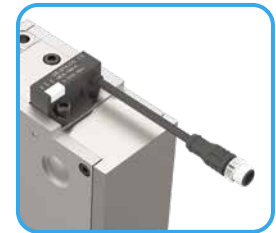
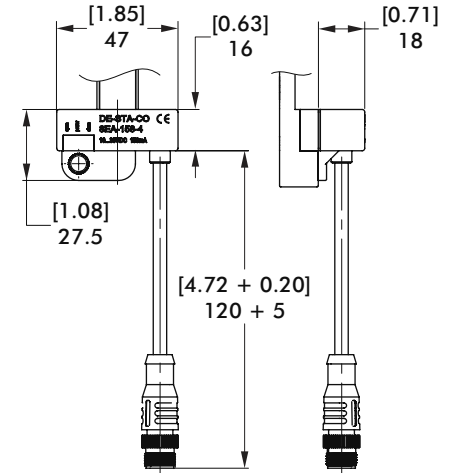
L8, N8 Inductive Sensing System



L9, N9 Inductive Sensing System with 90° Connector

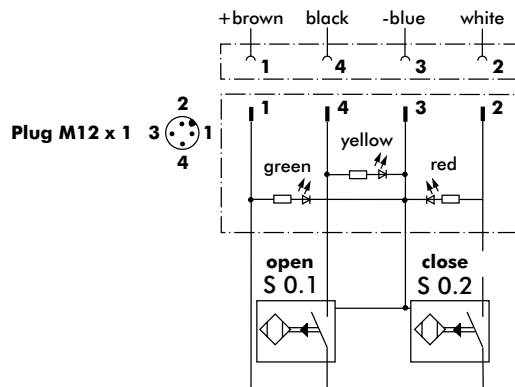


K8, K9 Inductive Sensing System with Pigtail Connector



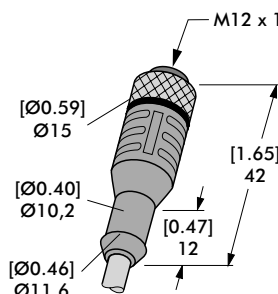
Inductive Sensor Wiring Diagram

Sensing system immune to interference from AC / DC arc welding.

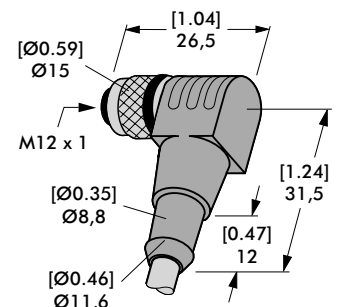


Sensor Cable Accessories

Sensor Cables (1 connector & 5m cable)	Order no.
M12x1 connector, straight, 5-pin	8EL-002-1
M12x1 connector, 90° angular, 4-pin	8EL-003-1



Straight Cable
8EL-002-1



Angular Cable
8EL-003-1